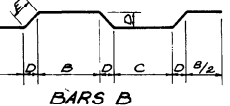
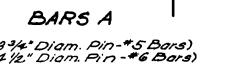
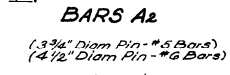
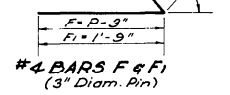
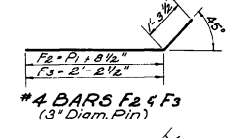
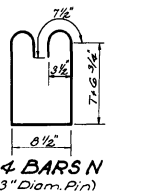
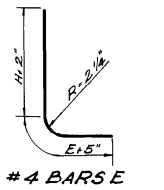
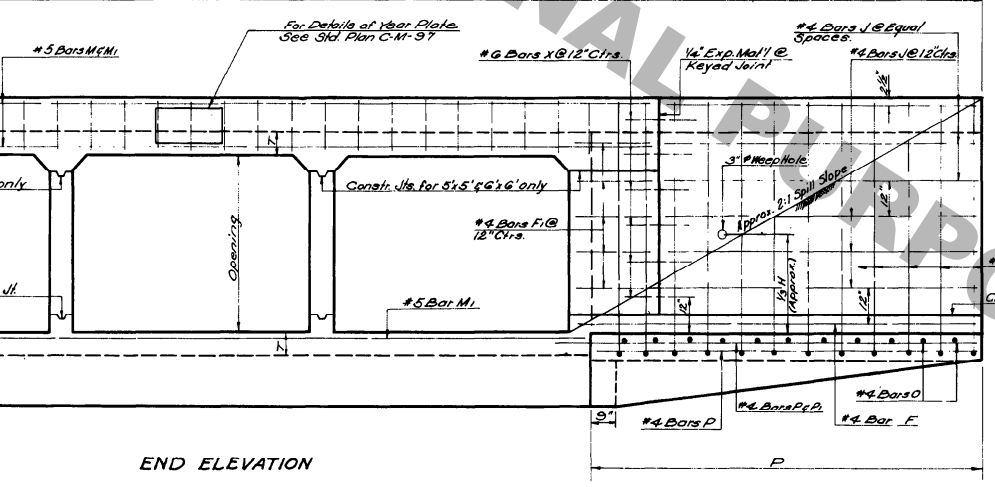
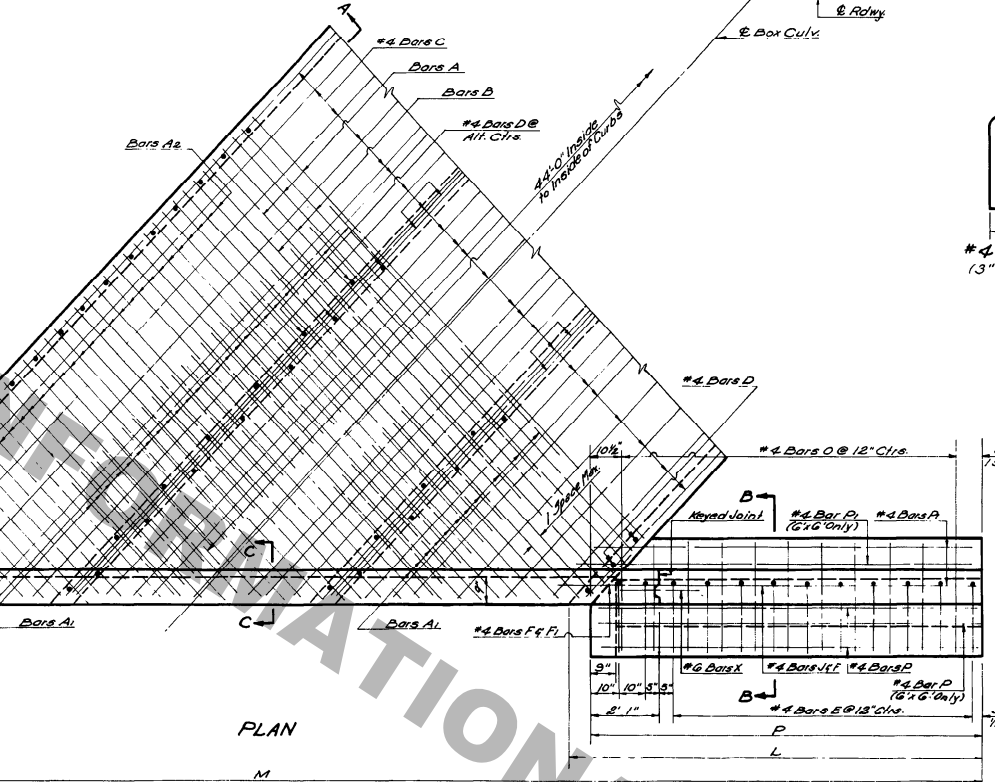
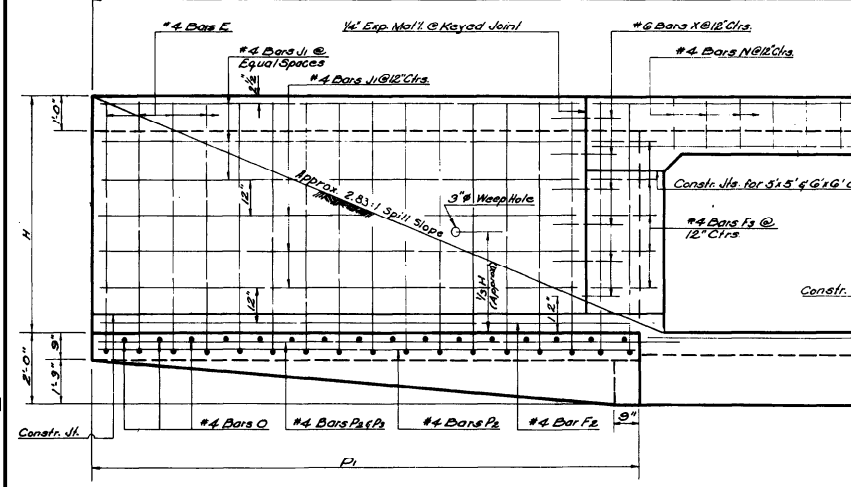
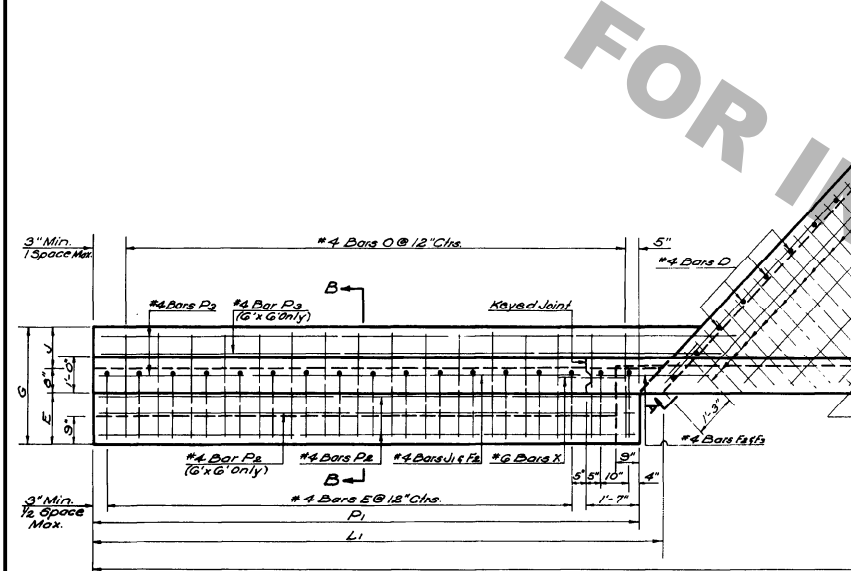
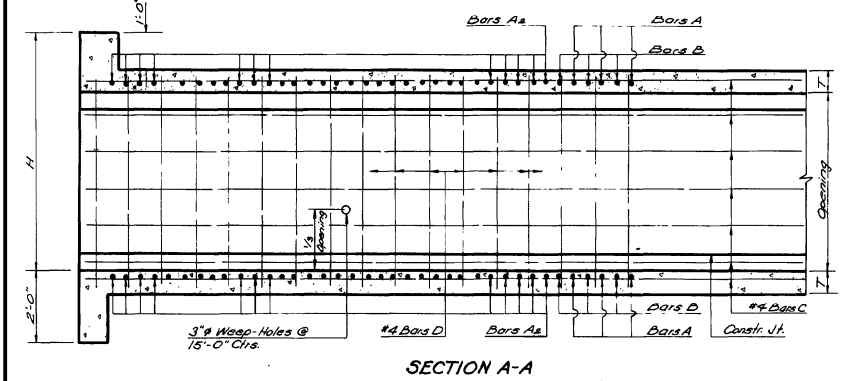


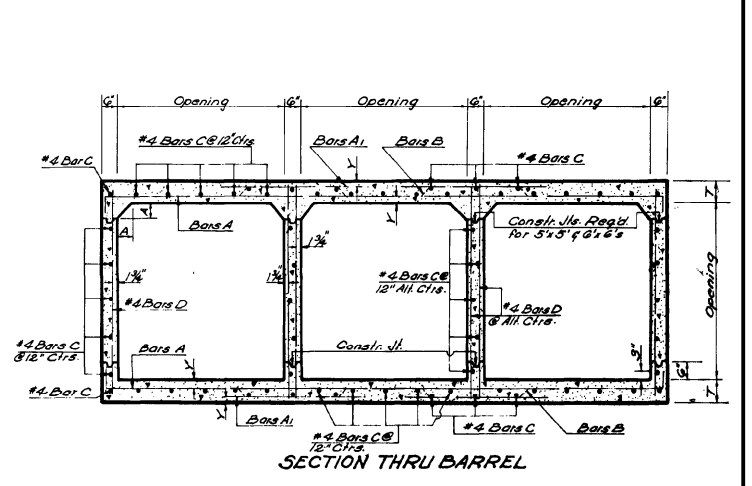
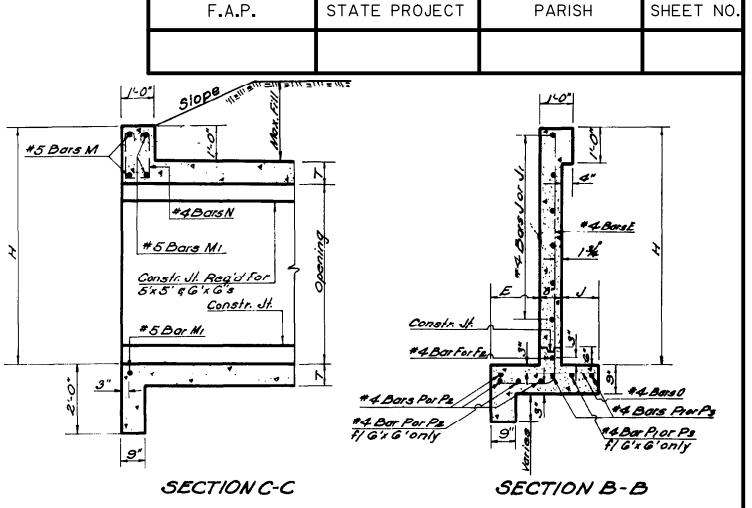
APPROVED BY: *Dempsey D. White* 1-11-78  
CHIEF ENGINEER DATE

### CC-S-M-4-6-S-45°-I

F.A.P.	STATE PROJECT	PARISH	SHEET NO.



SIZE	PWDIM	A	B	C	D	E
4x4	3 3/4"	3 1/2"	2 1/2"	1 1/2"	3 3/4"	4 1/2"
5x5	3 3/4"	3 1/2"	2 1/2"	1 1/2"	3 3/4"	5 1/2"
6x6	4 1/2"	4 1/2"	3 1/2"	2 1/2"	4 1/2"	6 1/2"



OPENINGS	DIMENSIONS												QUANTITIES									
	SIZE	AREA	MAX. FILL	BARREL	WINGS AND CURBS								PER LIN. FT. OF BARREL		44'-0" CULVERT		OPENINGS					
FEET	NO.	Sq. Ft.	FT.	FT.	T	A	Y	E	J	G	H	L	P	Pi	M	STEEL POUNDS	CONCRETE CU. YDS.	STEEL POUNDS	CONCRETE CU. YDS.	NO.	SIZE	
4x4	2	32	25													36.7%	85.26	0.6409	4973	43.60	2	4x4
5x5	4	100	27	7	7 1/2	5 1/4	1-5	1-5	1-2	3-3	6-7 1/2	12-5 1/2	17-1 1/2	11-9	10-5	52.3%	170.56	1.1767	5504	74.84	4	5x5
6x6	2	72	15													52.3%	137.72	1.0195	8154	72.23	2	6x6

OPENINGS	BARREL REINFORCEMENT												CURB AND WING REINFORCEMENT																									
	BARS A		BARS A1		BARS A2		BARS B		BARS C		BARS D		BARS E		BARS F		BARS F1		BARS F2		BARS F3		BARS J		BARS J1		BARS O		BARS O1		BARS N		BARS M		BARS X			
SIZE	NO.	Length	Spec	NO.	Length	Spec	NO.	Length	Spec	NO.	Length	Spec	NO.	Length	Spec	NO.	Length	Spec	NO.	Length	Spec	NO.	Length	Spec	NO.	Length	Spec	NO.	Length	Spec	NO.	Length	Spec	NO.	Length	Spec		
4x4	2	74	10-0	12	5	34	3'-10"	612	5	64	1-9	6000	8-3	6	5	76	10-2 1/4	12	38	47-10	141	4-10	12															
5x5	4	100	27-0	12	5	34	3'-10"	612	5	100	13-3	6	5	60	14-1 1/2	12	36	47-10	188	4-10	12																	
6x6	2	72	15-0	12	5	34	3'-10"	612	5	72	18-0 1/4	10	66	47-10	189	5-11	12																					

**GENERAL NOTES:**  
 Construction Specifications: Latest Approved La. Dept. of Hwy. Standard Specifications.  
 Design Specifications: A.A.S.H.O. 1961 as amended; by Int. Spec., 1964.  
 Live Load: HS20-44 or Military Loading, Whichever is greater.  
 All Concrete to be Class "A".  
 All Exposed Corners to have 1/4" Chamfer, unless otherwise noted.  
 Reinforcement shall be Billet Steel A.S.T.M. A615 or Rail Steel A.S.T.M. A616 or A617.  
 Dimensions relating to reinforcing steel are to Bar Centers.  
 A 1'-6" Square of Plastic Filter Cloth (See Qualified Products List) shall be placed in contact with concrete behind each Weep Hole, in addition to approx. 2 Cu. Ft. of Concrete Sand.  
 For Detail of Joints, See Std. Plan C.M.-49.  
 #6 Bars x to be 3/4" Smooth and Greased for 1'-0" of Length.

**STANDARD PLAN  
 MULTIPLE OPENINGS  
 REINFORCED CONCRETE BOX CULVERTS  
 STRAIGHT WINGS  
 45° CROSSINGS  
 2:1 SPILL SLOPE NORMAL TO CHANNEL**

STATE OF LOUISIANA  
 DEPARTMENT OF HIGHWAYS

DESIGNED BY: *H. J. ...* DRAWN BY: *M. K. ...* TRACED BY: *M. K. ...*  
 CHECKED BY: *H. J. ...* DATE: *11-11-78*